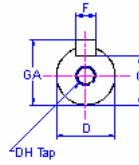
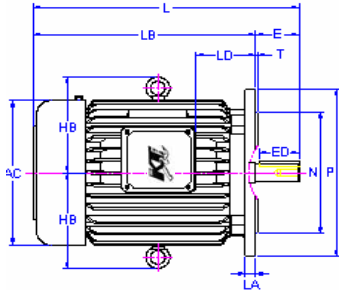
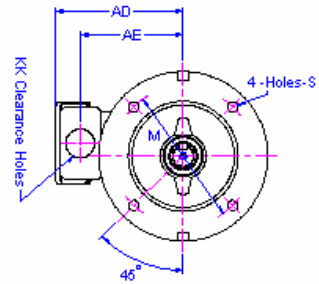
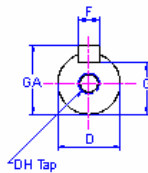
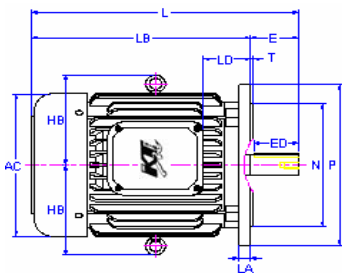
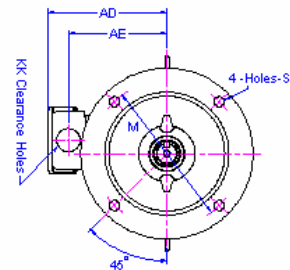


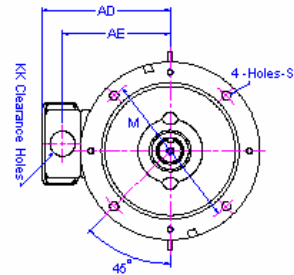
**Fig. 1**



**Fig. 2**



**Fig. 3**



**Outline Dimensions 外型尺寸圖**

Specification 規格					AEVF 【B5】 Flange Mounted Series (立式)													
Output(HP)輸出			Frame No.	Fig.No.	AC	AD	AE	HB	KK	L	LA	LB	LD	M	N	P	S	T
2P	4P	6P	框號	圖示														
0.25	0.25	-	63	1	144	123	93	-	22	248	12	225	74	130	110	160	10	3.5
0.5	0.5	0.25	71	1	162	133	103	-	22	277.5	12	247.5	82	130	110	160	10	3.5
1	1	0.5	80	1	177	144	112	-	22	282	12	242	60	165	130	200	12	3.5
2 / 3	2	1	90L	1	200	157	125	-	22	371.5	12	321.5	113	165	130	200	12	3.5
-	3	2	100L	2	219	180	145	140	28	374.5	16	314.5	88	215	180	250	14.5	4
5	5	3	112M	2	235	189	154	150	28	431	16	371	135	215	180	250	14.5	4
7.5 / 10	7.5	5	132S	2	273	224	180	169	35	454	20	374	97	265	230	300	14.5	4
-	10	7.5	132M	2	273	224	180	169	35	492	20	412	116	265	230	300	14.5	4
15 / 20	15	10	160M	3	334	263	218	271	35	608	20	498	151	300	250	350	18.5	5
25	20	15	160L	3	334	263	218	271	35	652	20	542	173	300	250	350	18.5	5
30	-	-	180M	3	382	305	250	241	52	672	20	562	170.5	350	300	400	18.5	5
-	25 / 30	20	180M	3	382	305	250	241	52	672	20	562	170.5	350	300	400	18.5	5
40	-	-	180L	3	382	305	250	241	52	710	20	600	189.5	350	300	400	18.5	5
-	40	25 / 30	180L	3	382	305	250	241	52	710	20	600	189.5	350	300	400	18.5	5

Specification 規格					Shaft end (軸端)						Bearing(軸承)		Appro.Weight	
Output(HP)輸出			Frame No.	Fig.No.	D	E	ED	F	G	GA	DH	Load Side	Anti-Load Side	概略重量
2P	4P	6P	框號	圖示								負載側	反負載側	kgs
0.25	0.25	-	63	1	11	23	18	4	8.5	12.5	M4*8	6201zz	6201zz	8.5
0.5	0.5	0.25	71	1	14	30	25	5	11	16	M5*10	6203zz	6202zz	12
1	1	0.5	80	1	19	40	35	6	15.5	21.5	M6*12	6204zz	6203zz	16
2 / 3	2	1	90L	1	24	50	45	8	20	27	M8*16	6205zz	6204zz	25
-	3	2	100L	2	28	60	55	8	24	31	M10*20	6206zz	6205zz	35
5	5	3	112M	2	28	60	55	8	24	31	M10*20	6306zz	6305zz	45
7.5 / 10	7.5	5	132S	2	38	80	75	10	33	41	M12*24	6308zz	6306zz	65
-	10	7.5	132M	2	38	80	75	10	37	41	M12*24	6308zz	6306zz	75
15 / 20	15	10	160M	3	42	110	105	12	37	45	M16*32	6309zz	6307zz	120
25	20	15	160L	3	42	110	105	12	37	45	M16*32	6309zz	6307zz	140
30	-	-	180M	3	48	110	105	14	42.5	51.5	M16*32	6311zz	6310zz	185
-	25 / 30	20	180M	3	48	110	105	14	42.5	51.5	M16*32	6311zz	6310zz	230
40	-	-	180L	3	55	110	105	16	49	59	M20*40	6312zz	6310zz	250
-	40	25 / 30	180L	3	55	110	105	16	49	59	M20*40	6312zz	6310zz	290

備註(Remark): 1.軸心直徑 "D" 公差(Tolerance of Shaft dia "D"):Φ11~Φ28:j6,Φ38~Φ48:k6,Φ55~Φ95:m6

2.立式(Flange mounted):法蘭面凸緣 "N"公差(Tolerance of guidance dia "N"):h7

3.以上數值如變更,恕不另行通知(All data subject to achange without prior notice)