

Fig. 1

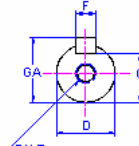
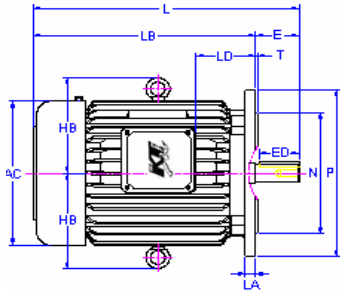
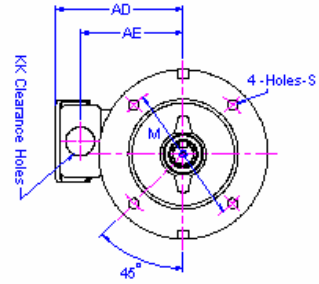


Fig. 2

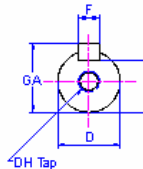
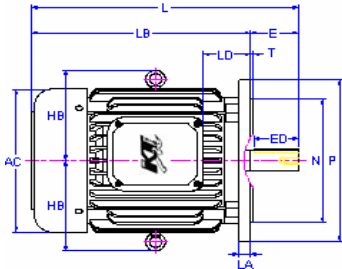
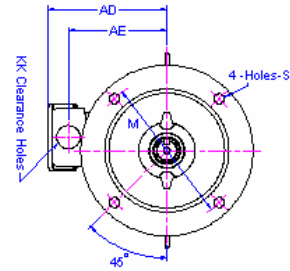
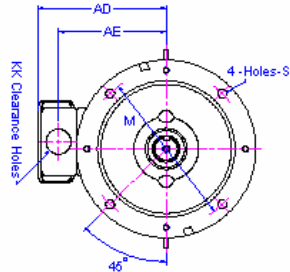


Fig. 3



Outline Dimensions 外型尺寸圖

| Specification 規格 | | | | AEUL (B5) Flange Mounted Series (立式) | | | | | | | | | | | | | | |
|------------------|------|-----------|---------|--------------------------------------|-----|-----|-----|-----|----|-------|----|-------|-----|-----|-----|-----|------|-----|
| Output(HP)輸出 | | Frame No. | Fig.No. | AC | AD | AE | HB | KK | L | LA | LB | LD | M | N | P | S | T | |
| 2P | 4P | 6P | 框號 | 圖示 | | | | | | | | | | | | | | |
| 0.25 | 0.25 | - | 63 | 1 | 144 | 123 | 93 | - | 22 | 248 | 12 | 225 | 74 | 130 | 110 | 160 | 10 | 3.5 |
| 0.5 | 0.5 | 0.25 | 71 | 1 | 162 | 133 | 103 | - | 22 | 277.5 | 12 | 247.5 | 82 | 130 | 110 | 160 | 10 | 3.5 |
| 1 | 1 | 0.5 | 80 | 1 | 177 | 144 | 112 | - | 22 | 282 | 12 | 242 | 60 | 165 | 130 | 200 | 12 | 3.5 |
| 2 / 3 | 2 | 1 | 90L | 1 | 200 | 157 | 125 | - | 22 | 371.5 | 12 | 321.5 | 113 | 165 | 130 | 200 | 12 | 3.5 |
| - | 3 | 2 | 100L | 2 | 219 | 180 | 145 | 140 | 28 | 374.5 | 16 | 314.5 | 88 | 215 | 180 | 250 | 14.5 | 4 |
| 5 | 5 | 3 | 112M | 2 | 235 | 189 | 154 | 150 | 28 | 431 | 16 | 371 | 135 | 215 | 180 | 250 | 14.5 | 4 |
| 7.5 / 10 | 7.5 | 5 | 132S | 2 | 273 | 224 | 180 | 169 | 35 | 454 | 20 | 374 | 97 | 265 | 230 | 300 | 14.5 | 4 |
| - | 10 | 7.5 | 132M | 2 | 273 | 224 | 180 | 169 | 35 | 492 | 20 | 412 | 116 | 265 | 230 | 300 | 14.5 | 4 |
| 15 / 20 | 15 | 10 | 160M | 3 | 334 | 263 | 218 | 271 | 35 | 608 | 20 | 498 | 151 | 300 | 250 | 350 | 18.5 | 5 |
| - | 20 | 15 | 160L | 3 | 334 | 263 | 218 | 271 | 35 | 652 | 20 | 542 | 173 | 300 | 250 | 350 | 18.5 | 5 |

| Specification 規格 | | | | Shaft end (軸端) | | | | | | | | Bearing(軸承) | | Appro.Weight |
|------------------|------|-----------|---------|----------------|----|-----|-----|----|------|------|-----------|----------------|--------|--------------|
| Output(HP)輸出 | | Frame No. | Fig.No. | D | E | ED | F | G | GA | DH | Load Side | Anti-Load Side | 概略重量 | |
| 2P | 4P | 6P | 框號 | 圖示 | | | | | | | 負載側 | 反負載側 | kgs | |
| 0.25 | 0.25 | - | 63 | 1 | 11 | 23 | 18 | 4 | 8.5 | 12.5 | M4*8 | 6201zz | 6201zz | 8.5 |
| 0.5 | 0.5 | 0.25 | 71 | 1 | 14 | 30 | 25 | 5 | 11 | 16 | M5*10 | 6203zz | 6202zz | 12 |
| 1 | 1 | 0.5 | 80 | 1 | 19 | 40 | 35 | 6 | 15.5 | 21.5 | M6*12 | 6204zz | 6203zz | 16 |
| 2 / 3 | 2 | 1 | 90L | 1 | 24 | 50 | 45 | 8 | 20 | 27 | M8*16 | 6205zz | 6204zz | 25 |
| - | 3 | 2 | 100L | 2 | 28 | 60 | 55 | 8 | 24 | 31 | M10*20 | 6206zz | 6205zz | 35 |
| 5 | 5 | 3 | 112M | 2 | 28 | 60 | 55 | 8 | 24 | 31 | M10*20 | 6306zz | 6305zz | 45 |
| 7.5 / 10 | 7.5 | 5 | 132S | 2 | 38 | 80 | 75 | 10 | 33 | 41 | M12*24 | 6308zz | 6306zz | 65 |
| - | 10 | 7.5 | 132M | 2 | 38 | 80 | 75 | 10 | 37 | 41 | M12*24 | 6308zz | 6306zz | 75 |
| 15 / 20 | 15 | 10 | 160M | 3 | 42 | 110 | 105 | 12 | 37 | 45 | M16*32 | 6309zz | 6307zz | 120 |
| - | 20 | 15 | 160L | 3 | 42 | 110 | 105 | 12 | 37 | 45 | M16*32 | 6309zz | 6307zz | 140 |

備註(Remark) : 1.軸心直徑 "D" 公差(Tolerance of Shaft dia "D"):Φ11~Φ28:j6,Φ38~Φ48:k6
 2.立式(Flange mounted):法蘭面凸緣 "N"公差(Tolerance of guidance dia "N"):h7
 3.以上數值如變更, 恕不另行通知(All data subject to a change without prior notice)